

---

# WARWICKSHIRE WASTE PARTNERSHIP

COMMITTEE ROOM 2, SHIRE HALL, WARWICK

2:00pm, TUESDAY 26<sup>th</sup> JUNE 2012

## AGENDA

### General

1. **Apologies**
2. **Disclosures of personal and prejudicial interests**
3. **Minutes of the previous meeting, including matters arising**
4. **Chair's announcements**

### Reports

5. **Review of Warwickshire's Municipal Waste Management Strategy**
6. **Household Waste Recycling Centre Direct Service Project**
7. **Update on Warwickshire Partners' Current and Forthcoming Waste Initiatives**
8. **Review of Warwickshire's Love Food Hate Waste Christmas Campaign**
9. **Full Year Estimated Waste and Recycling Data**

### Other

10. **Agenda item suggestions for next meeting**
11. **Confirmation of future meeting dates**
  - 18 September 2012
  - 4 December 2012
12. **Any urgent items**

JIM GRAHAM  
Secretary of the Partnership  
Shire Hall  
Warwick

## **Membership of the Warwickshire Waste Partnership**

### **North Warwickshire Borough Council**

*Councillor Hayden Phillips*

### **Nuneaton and Bedworth Borough Council**

*Councillor Bill Sheppard*

### **Rugby Borough Council**

*Councillor Dr. Mark Williams*

### **Stratford-on-Avon District Council**

*Councillor Mike Brain*

### **Warwick District Council**

*Councillor Dave Shilton (Vice Chair)*

### **Warwickshire County Council**

*Councillors Martyn Ashford, Jeff Clarke, Alan Cockburn (Chair), Ray Sweet and John Whitehouse*

## **Enquiries**

Please contact:

Richard Maybey, Democratic Services Officer, Warwickshire County Council

T: (01926) 476876

E: [richardmaybey@warwickshire.gov.uk](mailto:richardmaybey@warwickshire.gov.uk)

**WARWICKSHIRE WASTE PARTNERSHIP**  
**Minutes of the meeting held at 2pm on 6 March 2012, Shire Hall, Warwick**

**Present:**

**Members**

Councillor Jeff Clarke  
Councillor Alan Cockburn (Chair)  
Councillor Michael Doody  
Councillor Hayden Phillips  
Councillor Carolyn Robbins  
Councillor Bill Sheppard  
Councillor Dave Shilton (Vice Chair)  
Councillor Ray Sweet

**Officers**

Becky Davies	Ian Marriot
Olivia Davies	Richard Maybey
Brent Davis	Olly Scholefield
Glenn Fleet	Louise Wall
Sean Lawson	Bernard Woodhall

**Others**

Councillor Barry Lobbett

**1. Apologies**

Apologies for absence were received for Councillor Dr. Mark Williams, who was replaced by Councillor Carolyn Robbins, Councillor Mike Brain and Tony Perks

**2. Disclosures of personal and prejudicial interests**

None

**3. Minutes of the previous meeting, including matters arising**

The minutes were approved and signed by the Chair

**4. Chair's announcements**

The Chair invited feedback from any members who attended the recent Waste Partnership Conference. Cllr Shilton, who chaired the conference, stated that feedback from delegates was very positive and there were many new ideas discussed that would be taken forward in partnership.

**5. Update on Warwickshire Partners' Current and Forthcoming Waste Initiatives**

Each partner authority provided an update on the waste initiatives in their region.

**5.1 North Warwickshire Borough Council**

- (i) A Task & Finish Group has been considering options for increasing recycling performance and will report its findings in the next few weeks, including a recommendation to move to alternative collections. Nuneaton & Bedworth Borough Council were thanked for their contributions
- (ii) Vehicles have been equipped with improved systems to provide drivers with better information
- (iii) The recycling officer has been appointed for a further 12 months and will continue to promote awareness and education of recycling, particularly within schools

**5.2 Nuneaton & Bedworth Borough Council**

- (i) The alternate collection scheme, which began in October, is progressing well, with positive feedback received from residents

- (ii) The focus for 2012 will be to expand the scheme into flats, which will increase recycling volumes further
- (iii) The recycling officer has been appointed for a further 12 months
- (iv) A food waste collection scheme is anticipated to start in November 2012

### 5.3 Rugby Borough Council

- (i) Green bins are being rebranded to inform residents that they accept food waste
- (ii) A textile recycling scheme is starting imminently
- (iii) Mini recycling sites in the Borough are being misused by fly-tippers, which may lead to a review of their future viability
- (iv) Work is underway with schools to educate them that they can recycle more than just paper and cardboard

### 5.4 Warwick District Council

- (i) Alternate collections are being rolled out to more households in the District, thanks to smaller collection vehicles that can access narrower lanes
- (ii) The distribution of free caddy liners resulted in an increase in the amount of food waste being recycled
- (iii) Feedback on the project to increase recycling at Warwick Gates indicated that a lack of containers was the main barrier for residents
- (iv) A trial of co-mingled recycling for flat residents was well received, and is to be rolled out to other flats

### 5.5 Stratford District Council

- (i) There is a continued focus on reducing the level of contamination in co-mingled recycling. Information has been included alongside residents' council tax leaflet
- (ii) Officers are seeking to gain more accurate information on recycling levels from PURE, which directly affects the amount of recycling credits the District receives
- (iii) The future viability of mini-recycling centres may be reviewed, given the level of recycling capacity that residents have on their doorstep

### 5.6 Warwickshire County Council

- (i) WEEE – tenders are undergoing final evaluation
- (ii) Digital Waste Data System – tenders have been submitted for a new system, which will reduce administration and improve accuracy of information
- (iii) Recyclables Framework – soft-market-testing is being undertaken on the optimum tender length
- (iv) Long-term residual waste – awaiting the outcome of a bid to partner with Coventry. If unsuccessful, the procurement process for a new contract will begin in April 2012 with a view to completion in 2013. Contingency exists within current contracts beyond 2013, which negates any risk of delay in procurement

5.7 Cllr Clarke asked how the authority was measuring the success of the Love Food Hate Waste campaign in terms of reducing overall residual waste volumes.

Glenn Fleet responded that residents were asked to complete a survey at the start and end of the campaign, which would identify any changing behaviours. Plus, any increase in the volume of food waste arriving at the In-Vessel Composter (IVC) facility at Ufton would provide a statistical measure.

5.8 Cllr Shilton asked if the partner authorities were being informed about the new Digital Waste Data System. Glenn stated that this system will initially only be used by disposal contractors, so there has been no need to liaise with the collection authorities as yet.

5.9 Cllr Shilton asked if the transfer of Household Waste Recycling Centres (HWRCs) in-house to WCC would yield information on the level of recyclables received, thereby enabling collection authorities to promote better use of kerbside collections by residents. Glenn replied that this type of data is already recorded via the Waste Data Flow and is available to the collection authorities.

### **6.0 Household Waste Recycling Centre Direct Service Project**

Glenn Fleet introduced the report, highlighting that contracts have been renegotiated with staff, heavy plant has been purchased using previous underspends, two vehicles and drivers have been taken on to reduce expenditure with contractors, and new signage has been deployed at the sites displaying the new opening hours. Only 5 official complaints have been received since the new opening hours began.

6.1 Cllr Robbins questioned if there would be later opening hours during the summer months. Glenn confirmed that later opening hours would operate on a Wednesday until 6.15pm and the weekend until 5.45pm from April to September.

6.2 Cllr Clarke asked if recycling volumes at the sites had changed as a result of the new opening hours. Glenn stated that this data was not yet available, but it would be useful to bring to members in the future.

6.3 Cllr Doody asked if the intention was to move away from using agency staff at the sites. Cllr Shilton asked if the authority had considered offering apprenticeships instead. Glenn stated that the use of agency staff had been necessary during the transition phase, but the intention is for all staff to be full-time WCC employees. An apprentice-style position has been created as part of the reorganisation of the waste management team.

6.4 Cllr Shilton asked what the monitoring and auditing arrangements were for the community-run shops at the sites. Glenn replied that the authority oversees the running of the shops. The operators receive money on the sale of goods, from which they pay the lease on the shop. Any surplus money is then used to establish and fund community projects.

### **7.0 Quarterly Waste and Recycling Data Update**

Glenn Fleet introduced the report, highlighting an overall reduction in waste volumes, despite negative performance in some areas.

- 7.1 Glenn stated that the current Refuse Derived Fuel contract does not provide particularly good value, therefore it will be terminated this year and the waste will be taken to landfill until an alternative contract is secured for next year.
- 7.2 Glenn also confirmed that a senior compliance officer is now in place to ensure the authority knows the destination of its waste streams.
- 7.3 Brent Davis questioned the accuracy of the composting rate for Nuneaton & Bedworth stated in section 6 of the report. Glenn agreed to seek clarification.

**8.0 Agenda item suggestions for next meeting**

None

**9.0 Confirmation of future meeting dates**

Agreed:

- 26 June 2012
- 18 September 2012
- 4 December 2012

**10.0 Any urgent items**

Bernard Woodhall stated that there had been recent thefts of textile recycling in North Warwickshire, which will be investigated and reported to the police. Sean Lawson added that there had been some partnership work between the Borough Council, the Police and Trading Standards to address similar problems in Rugby. Cllr Shilton suggested that a multi-agency, county-wide meeting be convened to consider strategies for combating this serious issue.

.....  
Chair

The meeting closed at 3.15pm

## Warwickshire Waste Partnership

26 June 2012

### Review of Warwickshire's Municipal Waste Management Strategy

#### Recommendation

That the Waste Partnership approves the draft scope (subject to any amendments necessary).

#### 1.0 Introduction

- 1.1 This report has been produced to provide an overview of the scope for the Waste Strategy Review project. It is important to stress that the project will be a review of the existing Joint Municipal Waste Management Strategy, it is not the intention to fundamentally re-write the strategy or start from a blank canvas.
- 1.2 The revised strategy will follow a similar format as the existing strategy (Appendix A), which was based on the Defra guidance for the development of Municipal Waste Management Strategies.
- 1.3 The scope of the strategy review will need to be agreed by the Warwickshire Waste Partnership (WWP).

#### 2.0 Warwickshire's Current Waste Strategy

- 2.1 Warwickshire currently has two strategy documents adopted by the Warwickshire Waste Partnership relating to the delivery of waste targets. The Joint Municipal Waste Management Strategy (2005) and a Joint Waste Minimisation Strategy (2007). Both strategy documents have also been adopted individually by each of the Authorities.
- 2.2 The key targets and objectives within the old documents are summarised below:
  - (i) Reduce the amount of waste produced in Warwickshire.
  - (ii) Work progressively towards higher recycling levels, exceeding current statutory targets of 30%<sup>1</sup>
  - (iii) Aim to reach inspirational county-wide targets of between 40-45% recycling to be achieved by 2009/10<sup>2</sup>

---

<sup>1</sup> The UK Waste Strategy 2000 set a national target to recycle or compost at least 30% by 2010. The EU recycling target is now 50% for municipal waste by 2020

<sup>2</sup> We are currently at 49% and expecting to achieve 56% by 2015

- (iv) Limit the amount of waste disposed of to landfill – making use of existing waste treatment facilities e.g., Coventry and Solihull’s EfW facility.
- (v) After maximising recycling and composting, treat all remaining waste using ‘other’ market technology (no new landfill contracts)<sup>3</sup>

### **3.0 Why Do We Need a Strategy Review?**

- 3.1 The world has changed dramatically since the publication of Warwickshire’s Municipal Waste Management Strategy in 2005, particularly in terms of the economy, the political landscape and the waste management industry as a whole.
- 3.2 The last year has seen challenging circumstances for the whole economy and for residents and councils in particular. We have over the past few years seen waste reduced, recycling and composting increased and reduced reliance on landfill, avoiding costs to taxpayers amounting to millions of pounds a year.
- 3.3 The European Union Waste Framework Directive 2008 was transposed into national law in March 2011. The directive impacts on the management of waste in the UK in a number of ways and we need to be sure we meet the new requirements.
- 3.4 The current government made a commitment to being ‘the greenest ever’ and has recognised that how we deal with our waste is important for a range of broader concerns such as material security, energy, climate change and environmental protection.
- 3.5 A review of national waste policies in June 2011 puts a zero waste economy at the centre of sustainability; for environmental protection, economic renewal and for addressing climate change. The government has made its ambition for wider social involvement; of localism and the big society; integral to its proposed waste strategy.

### **4.0 Areas to Cover in the Waste Strategy Review**

- 4.1 The waste strategy review will update a number of areas within the existing strategy including:

#### **Key Drivers**

- (i) European policy and legislation – waste hierarchy, national waste prevention plan, waste collection for specific materials
- (ii) National policy – zero waste economy, localism and big society, expansion of trade waste collection services, planned removal of LATs<sup>4</sup>
- (iii) Waste planning – WCC waste core strategy

---

<sup>3</sup> Updated as part of a Task and Finish Group in June 2011

<sup>4</sup> Landfill Allowance Trading Scheme (LATS) after the end of the 2012/13 scheme year



## **Where We are Today**

- (i) Key achievements – WDA, WCA, Community Groups and Businesses
- (ii) Interim targets
- (iii) Waste arisings
- (iv) Waste composition – kerbside residual, HWRC residual

## **Current Waste Management – Waste Hierarchy**

- (i) Waste prevention – LFHW, Master Composters/Gardeners
- (ii) Re-use – Shops, Cava, Greater Warwickshire Reuse Forum
- (iii) Collection – Co-mingled, Source segregated, Dual Stream, Frequency
- (iv) Recycling and composting – MRF, IVC
- (v) Disposal – Landfill
- (vi) Current contracts

## **Projected Waste Management**

- (i) Waste quantities
- (ii) Planned activities/projects/contracts

## **Options for the Future Including Delivery**

- (i) Waste prevention
- (ii) Reuse
- (iii) Collection
- (iv) Recycling and composting
- (v) Treatment and Disposal

## **Keeping Track of Achievements**

- (i) Objectives
- (ii) Targets
- (iii) Monitoring plan
- (iv) Annual report

## **5.0 Review Process**

- 5.1 The Strategy review process will be overseen and directed by the Warwickshire Waste Partnership. A project co ordination board will be set up to manage the process. The board will report back at key stages to the Warwickshire Waste Partnership.

5.2 The government has yet to make a decision regarding the legal requirement of Joint Municipal Waste Management Strategies and it is likely that this may not happen until 2013. By carrying out this review, it will meet the needs of the present strategy requirements and address the partners' needs if not required to pursue a legally required Joint Municipal Waste Management Strategy.

## 6.0 Next Steps

6.1 A draft timetable for the review process is included at **Appendix B**, which covers the following steps:

- (i) Develop scope for review and obtain agreement from WWP.
- (ii) Develop detailed plan and timetable.
- (iii) Review existing Waste Strategies, Waste Policy and existing waste collection schemes and performance.
- (iv) Review future performance options (inc data) and establish new targets.
- (v) Present future performance options and new targets to WWP for comment and approval.
- (vi) Production of revised strategy and summary document.
- (vii) Present revised strategy to WWP for comment and approval.
- (viii) Produce final document.
- (ix) Present final report to WWP for approval before adoption by individual Authorities.

	<b>Name</b>	<b>Contact Information</b>
Report Author	Tamalyn Goodwin	<a href="mailto:tamalngoodwin@warwickshire.gov.uk">tamalngoodwin@warwickshire.gov.uk</a> 01926 412724
Head of Service	Louise Wall	<a href="mailto:louisewall@warwickshire.gov.uk">louisewall@warwickshire.gov.uk</a>
Strategic Director	Monica Fogarty	<a href="mailto:monicafogarty@wrawickshire.gov.uk">monicafogarty@wrawickshire.gov.uk</a>
Portfolio Holder	Councillor A Cockburn	<a href="mailto:cllrcockburn@warwickshire.gov.uk">cllrcockburn@warwickshire.gov.uk</a>

## **Warwickshire's Municipal Waste Management Strategy - Existing Content**

### **1. Introduction**

- 1.1 What is the purpose of the Waste Strategy?
- 1.2 Why do we need a Waste Strategy?
- 1.3 What does the Waste Strategy cover?
- 1.4 Roles and responsibility – Strategy development
- 1.5 Roles and responsibility – Waste management
- 1.6 How has the Waste Strategy been developed?

### **2. What are the Key Drivers for Development?**

- 2.1 Sustainable development
- 2.2 European Policy and Legislation
- 2.3 National Requirements
- 2.4 Strategic Partnership for Warwickshire 2005 – 2008
- 2.5 Waste Planning and Policy Guidance

### **3. Where are the Key Drivers for Development?**

- 3.1 Background – Warwickshire
- 3.2 Managing Waste in Warwickshire
- 3.3 Waste Arisings
- 3.4 Waste Composition

### **4. Current Waste Management**

- 4.1 Collection
- 4.2 Abandoned and End of Life Vehicles
- 4.3 Collection of fly tipped waste
- 4.4 Recycling and Composting
- 4.5 Composting
- 4.6 Disposal
- 4.7 Existing Contracts
- 4.8 Current Waste Management Costs
- 4.9 What are we doing about our own waste?

### **5. The Growing Waste Problem**

- 5.1 Projection of future waste quantities
- 5.2 Implications for Warwickshire

## **6. How are We Going to Tackle Warwickshire's Waste Problem?**

- 6.1 Move up the waste hierarchy and develop sustainable methods of waste management
- 6.2 Minimise the amount of waste generated
- 6.3 Maximise recycling and composting
- 6.4 Limit the amount of waste land-filled
- 6.5 Make use of existing waste treatment infrastructure
- 6.6 Contribute to generation of energy from a non-fossil source
- 6.7 Our preferred options

## **7. Tackling the Waste Problem – Waste Prevention, Minimisation and Reuse**

- 7.1 How can we reduce the amount of waste we produce?
- 7.2 Engaging the public
- 7.3 National campaign – Recycle Now
- 7.4 Local campaign – Recycle for Warwickshire
- 7.5 Partnership working to reduce waste
- 7.6 Regional campaign – Midlands Waste and Recycling Initiative
- 7.7 Future challenges – Resource Management
- 7.8 Working with Businesses

## **8. Tackling the Waste Problem – Options for Waste Treatment and Disposal**

- 7.1 The options we considered
- 7.2 Market review
- 7.3 Possible treatment options
- 7.4 Identification of the Best Practicable Environmental Option (BPEO) for Managing Waste in Warwickshire

## **9. Tackling the Waste Problem – The Future of Waste Management in Warwickshire**

- 9.1 What does this mean for Warwickshire?
- 9.2 Requirements for new capacity
- 9.3 Continuing stakeholder involvement
- 9.4 Education and Information Campaign
- 9.5 Timetable

## **10. Keeping Track of Achievements – Monitoring and Review**

- 10.1 Waste Strategy monitoring and review
- 10.2 Critical review points

## Warwickshire Waste Partnership - 26 June 2012

### Timetable for Review of Warwickshire's Municipal Waste Management Strategy

Task	Jan-12	Feb-12	Mar-12	Apr-12	May-12	Jun-12	Jul-12	Aug-12	Sep-12	Oct-12	Nov-12	Dec-12	Jan-13	Feb-13	Mar-13	Apr-13	May-13	Jun-13	Jul-13
Develop scope and initial timeline																			
Develop timeline																			
Agree scope and key timeline with WWP																			
Produce development timeline and detailed plan																			
Obtain consultant support (if necessary) and utilise for key tasks such as waste composition, SEA support, consultation etc.																			
Review: strategies, policy, collection schemes and performance																			
Review: waste data and projections																			
Review: future performance options and establish new targets																			
Present future performance options & new targets to WWP																			
Produce draft document																			
Obtain comments on draft document																			
Schedule additional meetings of WWP (if required)																			
Production of revised strategy and summary document																			
Obtain approval of final document from WCC corporate board																			
Present revised strategy to WWP for comment and approval																			
Produce final document																			
Obtain approvals for final document before adoption from WCC corporate board and WWP.																			
Adoption by Individual Authorities process commences																			

## Warwickshire Waste Partnership

26 June 2012

### Household Waste Recycling Centre Direct Service Project

#### Recommendation

That the Waste Partnership notes the information and achievements made in the last few months on the project to bring all but one of Warwickshire's Household Waste Recycling Centres (HWRCs) under the direct operation of Warwickshire County Council.

#### 1.0 Introduction

At the last meeting of the Waste Partnership, an update on the operation of in-house Household Waste Recycling Centres (HWRCs) was provided. This report provides a further update on progress made since March 2012 and also gives an overview of the traffic data relating to the reduced opening hours as well as the annual tonnage data from the HWRCs.

#### 2.0 Background

A Household Waste Recycling Centre Review was carried out in 2010, enabling a detailed analysis of the sites to be carried out. As a result of the review, the authority was able to assess the benefits of tendering and using a contractor, compared with running the sites in house. The latter was shown to be more cost effective and beneficial to the authority as a whole in terms of flexibility, increasing recycling on site etc.

#### 3.0 Implementation of In-house Operations

Between March 2012 to June 2012, the following progress has been made:

- (i) All health and safety risk assessments checked and implemented
- (ii) Effective management of new haulage and recyclables contracts
- (iii) New reuse shops installed at Cherry Orchard, Stockton, Shipston, Wellesbourne and Grendon HWRCs
- (iv) Takeover of the four reuse shops at Cherry Orchard, Stockton, Shipston and Wellesbourne by Warwickshire Community Recycling
- (v) Complete takeover of operations at the Wellesbourne and Stockton HWRCs by Warwickshire Community Recycling – WCC are continuing to support the sites and will continue to do so for the next few months

- (vi) Installation of a fence at Hunters Lane HWRC to allow the reuse shop to open independently of the site
- (vii) Feasibility investigations into a Community RePaint programme for Warwickshire
- (viii) Construction of new Lower House Farm HWRC and Transfer Station on target
- (ix) Planning permission submitted by contractor WRG for new Nuneaton & Bedworth HWRC at Judkins
- (x) Award and implementation of new WEEE contract to DHL
- (xi) Completed recruitment process for recycling advisors
- (xii) Recruitment of driver for haulage vehicle
- (xiii) Continued staff training for plant, compactors and health and safety
- (xiv) Continued improvements to signage

## 4.0 Change of Site Opening Times

4.1 On 9 January, the site opening times changed over to 9.30am to 3.15pm weekdays and 8.30am to 4.15pm on weekends (except Shipston). Original site opening hours were:

	Burton Farm	Cherry Orchard	Grendon	Hunters Lane	Judkins	Princes Drive	Shipston	Stockton	Wellesbourne
<b>Winter</b>									
Monday - Friday	8am to 4.30pm	9am to 4.30pm	9am to 4.30pm	8am to 4.30pm	8am to 4.30pm	8am to 4.30pm	9am to 4.30pm	9am to 4.30pm	8am to 4.30pm
Saturday	8am to 4.30pm	9am to 4.30pm	9am to 4.30pm	8am to 4.30pm	8am to 5.30pm	8am to 4.30pm	9am to 12.30pm	9am to 4.30pm	9am to 4.30pm
Sunday	9am to 4.30pm	9am to 4.30pm	9am to 4.30pm	9am to 4.30pm	9am to 4pm	8am to 4.30pm	9am to 12.30pm	9am to 4.30pm	9am to 4pm
<b>Summer</b>									
Monday - Friday	8am to 6pm	9am to 6.30pm	9am to 4.30pm	8am to 6pm	8am to 6.30pm	8am to 6.30pm	9am to 4.30pm	9am to 4.30pm	8am to 4.30pm
Saturday	8am to 6pm	9am to 6.30pm	9am to 4.30pm	8am to 6pm	8am to 5.30pm	8am to 6.30pm	9am to 12.30pm	9am to 4.30pm	9am to 4.30pm
Sunday	9am to 6pm	9am to 6.30pm	9am to 4.30pm	9am to 6pm	9am to 4pm	8am to 6.30pm	9am to 12.30pm	9am to 4.30pm	9am to 4pm

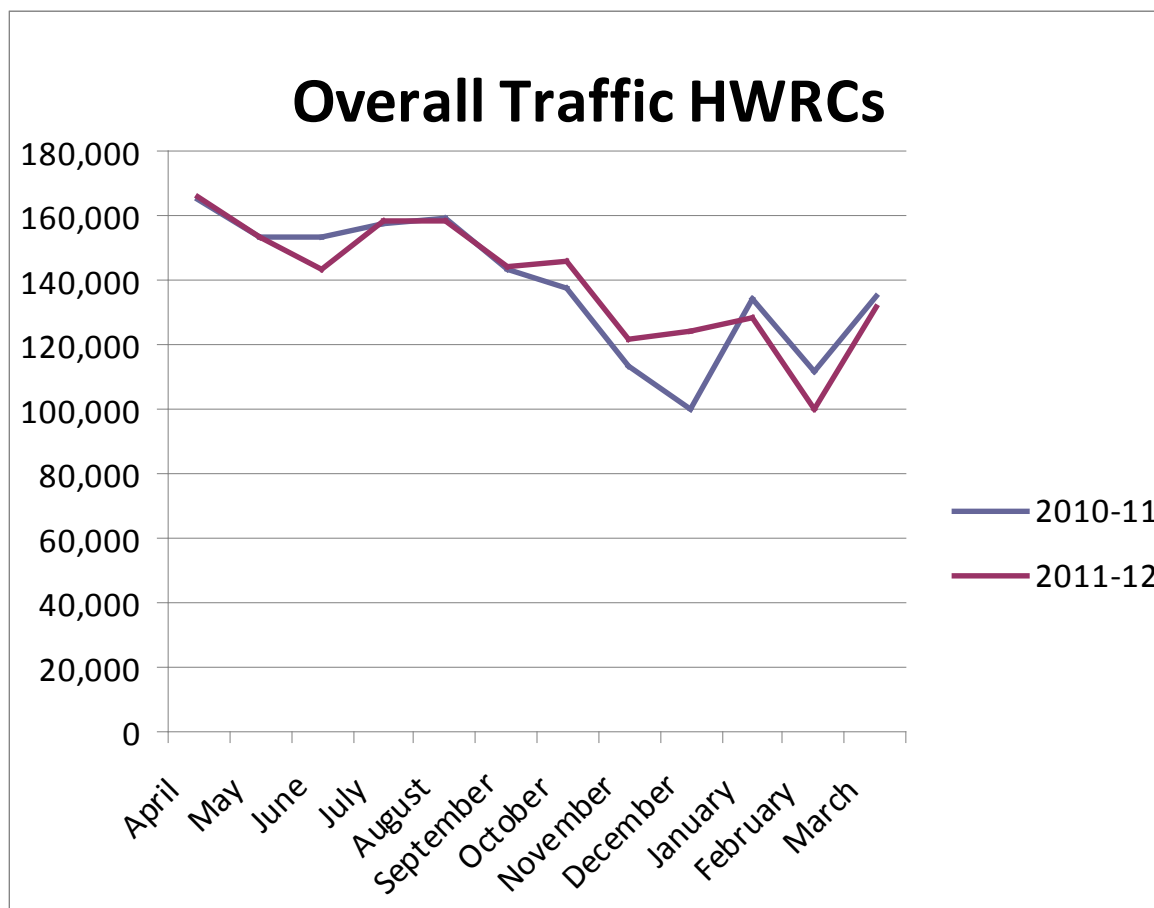
4.2 The implementation of the new opening hours went well, with the waste management team receiving just six official complaints regarding reduced opening hours across all sites from January to March 2012.

4.3 An overview of the traffic data relating to the reduced hours is provided below in section 5.

## 5.0 Traffic Data

- 5.1 The effect of the change in opening hours on traffic volumes visiting the HWRCs across the county was investigated using the data from traffic counters at seven HWRCs<sup>1</sup> across Warwickshire. Traffic data from Grendon HWRC and Judkins HWRC is not available but is included using estimations (Grendon estimated at 90% of Cherry Orchard and Judkins estimated at 80% of Princes Drive).
- 5.2 Traffic data from the nine HWRCs for both 2010/11 and 2011/12 are shown in Graph 1 and Table 1 below.

**Graph 1: Total traffic data**



- 5.3 Table 1 also shows the monthly change between the two years and then provides an analysis of the months *before* the opening hour changes (April – December) and for the months *after* the opening hour changes (Jan – March).

<sup>1</sup> Hunter's Lane, Burton Farm, Princes Drive, Wellesbourne, Cherry Orchard, Shipston and Stockton



**Table 1: Total traffic figures**

	Overall		Monthly Change
	2010-11	2011-12	
<b>April</b>	165,192	166,195	1,003
<b>May</b>	153,689	153,377	-312
<b>June</b>	153,176	143,304	-9,872
<b>July</b>	157,523	158,581	1,058
<b>August</b>	158,858	158,574	-284
<b>September</b>	143,186	144,148	962
<b>October</b>	137,359	145,826	8,467
<b>November</b>	113,171	121,299	8,128
<b>December</b>	99,670	124,094	24,424
<b>January</b>	134,450	128,098	-6,353
<b>February</b>	111,787	100,403	-11,384
<b>March</b>	135,177	132,079	-3,098
<b>Totals</b>	<b>1,663,238</b>	<b>1,675,976</b>	<b>12,738</b>

	2010-11	2011-12	Period Change	Ave. Monthly Change for Period
<b>April - Dec</b>	1,281,824	1,315,397	33,573	3730
<b>Jan - Mar</b>	381,414	360,579	-20,835	-6945

- 5.4 The data shows that for the whole year 2011/12 there was an overall increase in traffic of 12,738 when compared to 2010/11.
- 5.5 The most notable increase occurred in December 2011, which received nearly a quarter more visits than in the previous year. The most significant reduction in traffic visits occurred in February 2012, when traffic figures reduced by 11,384 (just over 10%) when compared with February 2011.
- 5.6 From looking at the monthly average change for the HWRCs it can be seen that for the period *before* the change in opening hours there was an *increase* of 3,730 visits and for the period *after* the change there was a *decrease* in visits of nearly 7,000.
- 5.7 These changes are likely to be largely due to the change in opening hours although other factors may also play a part e.g., figures may be on the rise again as members of the public get used to the change in hours. It is recommended that the data be reviewed again once additional months data become available.

## 6.0 HWRC Total Waste Input Tonnages (including re-use, recycling, composting and disposal)

6.1 The effect of the change in opening hours on waste inputs to the HWRCs across the county has also been looked at and data on total waste inputs over the 2010/11 and 2011/12 years can be seen in Table 2 below.

6.2 In all but two months (October and December) we can see that waste inputs are lower in 2011/12.

**Table 2: Total Waste Inputs to HWRCs**

	2010/11 Waste Inputs	2011/12 Waste Inputs	Change
April	6856.06	6198.34	-657.72
May	5825.98	5719.23	-106.75
June	6033.59	5278.35	-755.24
July	5546.08	5191.14	-354.94
August	5544.67	5438.1	-106.57
September	5139.45	4952.37	-187.08
October	4664.49	4700.98	36.49
November	4324.05	4206.48	-117.57
December	2769.69	3641.16	871.47
<b>(Apr - Dec)</b>	<b>46704.06</b>	<b>45326.15</b>	<b>1377.91</b>
January	4649.29	4401.37	-247.92
February	4204.03	3605.78	-598.25
March	5662.01	4588.5	1073.51
<b>(Jan - Mar)</b>	<b>14515.33</b>	<b>12595.65</b>	<b>1919.68</b>

	2010- 11	2011- 12	Period Change	Ave. Monthly Change for Period
<b>April – Dec</b>	46,704	45,326	-1,378	-153
<b>Jan – Mar</b>	14,515	12,596	-1,920	-640

- 6.3 From looking at the monthly average change for the total waste inputs (including reuse, recycling, composting and disposal) going into the HWRCs, it can be seen that for the period *before* the change in opening hours there was an average monthly *decrease* of around 150 tonnes and for the period *after* the change the monthly average input had decreased further to around 640 tonnes less per month.
- 6.4 This early data suggests that the opening hours have had a significant effect on waste inputs to the HWRCs.
- 6.5 Again, it is recommended that the data be reviewed again once additional months data become available.

## 7.0 Ongoing Work Streams for 2012

Work will continue on the following areas of work:

- (i) Continuing work with CAVA regarding the work of Warwickshire Community Recycling
- (ii) Lower House Farm HWRC and Waste Transfer Station construction
- (iii) Nuneaton & Bedworth HWRC construction
- (iv) Takeover of lease to operate Lower House Farm Reuse Shop by Warwickshire Community Recycling
- (v) Provision of information to users relating to busy and quiet times
- (vi) Development of recyclables framework procurement and its implementation
- (vi) Investigations and set up of a community re-paint pilot
- (vii) DHL are talking with CAVA regarding the work of Warwickshire Community Recycling and possible WEEE reuse projects
- (viii) Further work on the site by site comparisons for traffic and waste data

	<b>Name</b>	<b>Contact Information</b>
Report Author	Kerry Moore	<a href="mailto:kerrymoore@warwickshire.gov.uk">kerrymoore@warwickshire.gov.uk</a> Tel: 01926 8064
Head of Service	Louise Wall	<a href="mailto:louisewall@warwickshire.gov.uk">louisewall@warwickshire.gov.uk</a>
Strategic Director	Monica Fogarty	<a href="mailto:monicafogarty@warwickshire.gov.uk">monicafogarty@warwickshire.gov.uk</a>
Portfolio Holder	Cllr Alan Cockburn	<a href="mailto:cllrcockburn@warwickshire.gov.uk">cllrcockburn@warwickshire.gov.uk</a>

## Warwickshire Waste Partnership

26 June 2012

### Update on Warwickshire Partners' Current and Forthcoming Waste Initiatives

#### Recommendation

The Waste Partnership is asked to acknowledge the work being undertaken in each partner authority.

#### 1.0 Introduction

- 1.1 This report provides an update on the various waste initiatives taking place in each authority area.
- 1.2 Authorities work together on communications initiatives where there is an associated benefit.

#### 2.0 North Warwickshire Borough Council

- 2.1 Work has begun to consider the options for service delivery following confirmation that an AWC service would be implemented across the Borough by October 2013 at the latest.
- 2.2 Continuing to work with local schools carrying out assemblies and classroom activities.
- 2.3 Recycling road shows being carried out over the summer focusing on waste minimisation and launch of the "Slim Black Bin" competition.
- 2.4 Joint project with Environmental Health to promote Food Safety Week and Love Food Hate Waste.

#### 3.0 Nuneaton & Bedworth Borough Council

- 3.1 The "Easy as 1,2,3" three bin waste collection service has been in place for six months. Figures are being finalised but early indications are that there has been a significant increase in the amount of recyclable material collected along with a large decrease in waste sent for disposal.
- 3.2 The next phase of the scheme is to bring flats onto the AWC collection. 25 flat sites have participated in a commingled recycling trial utilising Coventry City Council's contract. Contamination has been very low and further consideration is being given to a "dual stream" service to match the kerbside scheme. Once the

preferred option is identified it is intended to role the service out to all flat sites and carry out collections on alternate weeks.

- 3.3 Street sweepings from NBBC and NWBC are being tipped and bulked at St Mary's Road depot before being transferred to Sita's facility for recycling. Changes are being implemented to maximise the amount of sweepings available for recycling.
- 3.4 Consideration is being given to implementing food waste collections into the current scheme.

## **4.0 Rugby Borough Council**

### **Targeting food waste**

- 4.1 When garden waste collections began in Rugby Borough, the green bins delivered across the Borough specifically stated 'Garden Waste Only – No Food Waste'. However, since implementing the 3-bin service in 2009, cooked and uncooked food waste are accepted in the green bin.
- 4.2 A compositional waste analysis of the 3-bin service carried out in 2011 showed only 4% of food waste was being captured in the green bins with the vast majority of food waste going into the black residual bins.
- 4.3 In order to clarify the message that all food waste should be going into green bins; labels are being placed on all green bins stating this. The work is planned for relevant collection days between 28 May – 15 June 2012.

### **Kerbside Textile Recycling**

- 4.2 A pilot textile recycling collection took place in April with the council working in partnership with the Rugby Explorer Scouts (TRiES) who delivered out the kerbside collection bags to a target area, with staff from the street cleansing service collecting the material in. The Explorer Scouts benefitted from profit arising from the sale of textiles collected. This scheme is being extended across the Borough by working with a variety of community groups and organisations.

### **Review of Bring Sites**

- 4.3 A fundamental review of recycling bring sites is currently being carried out to evaluate the options of retaining all 36 sites, removing poor performing sites or removing all sites. Recommendations will be made on performance, value and consultation.

## **5.0 Warwick District Council**

- 5.1 The recycling team has recently been through a restructure. Graham Folkes-Skinner is now heading up the newly created Service Development Team which includes Becky Davies as Recycling Development Officer and Phil Sensicle and Joe Bell as Community Recycling Officers. The team will be focusing on service improvements and efficiencies, promotion of waste minimisation and recycling and the mobilisation of the new waste and recycling contract and any changes/developments that brings.

- 5.2 The Authority took part in International Compost Awareness Week in May and sold 180 bags of compost produced at SITA's composting site in Packington to Warwick District residents. The Authority also donated 20 bags of compost to 10 local schools (on a first-come, first-served basis). A roadshow was also organised and one of the area's Master Composters was invited to talk to residents.
- 5.3 The Authority trialled an alternate week commingled recycling collection with 40 complexes of flats in Leamington Spa. Results showed a recycling rate of 25% out of a possible 40% over the 12-week trial and a reduction in rubbish of 22%. The Authority has plans to roll out the scheme to a further 40 sites.
- 5.4 The Authority rolled out the main alternate week collection scheme to a further 900 properties, reducing the number still receiving a weekly sack refuse collection.
- 5.5 Tenders for the new waste and recycling contract have been submitted and are currently being evaluated. The successful bidder should know in September/October 2012.
- 5.6 The Authority is anticipating a significant increase in the recycling rate through the recycling of street sweepings that Warwickshire County Council has set up. We are just finalising the figures.

## **6.0 Stratford District Council**

- 6.1 Stratford District Council has recently targeted misuse of recycling centres (including fly tipping and commercial use) by raising awareness and reminding residents of what household recyclable materials can be left at the sites and how they should be left.
- 6.2 With our waste and recycling collection contractor and other partners, we are exploring the opportunities and options for kerbside WEEE and textile collections.
- 6.3 Stratford District Council is planning to attend a number of carnivals and fetes etc. across the district during the summer (June to Sept) to promote the recycling and waste reduction message. Including looking at possible recycling facilities for the Olympic Torch Run locations in the district and working with Tesco on a promotion during recycling week.
- 6.4 The Authority are actively working with third sector (specifically furniture reuse schemes) to divert re-usable items that are collected as part of the bulky waste collection service from landfill/energy from waste.
- 6.5 Stratford District Council and Pure Recycling who run the MRF at Ettington are currently working to target and reduce rejected materials following detailed compositional analysis from whole load testing (specifically carpets, textiles non-recyclable plastics and WEEE).

## 7.0 Warwickshire County Council

- 7.1 Work is taking place on the following tenders:
- (i) Recyclables Framework – contract documents being developed
  - (ii) Long Term Residual Waste – the business case is being discussed
  - (iii) Biowaste – the Authority re-tendered for biowaste
- 7.2 The contract for the new digital waste data system has been awarded to Open Sky and the contract has now been signed
- 7.3 The contract for WEEE has been awarded to DHL
- 7.4 Construction of new Lower House Farm HWRC and Transfer Station on target
- 7.5 Planning permission submitted by contractor WRG for new Nuneaton & Bedworth HWRC at Judkins
- 7.6 Warwickshire Community Recycling has taken over the operation of four reuse shops and 2 sites – WCC is continuing to support the organisation in the medium term
- 7.6 An initial scope for the strategy review has been produced
- 7.7 Improvement and Efficiency West Midlands are commissioning WCC to retender for West Midlands authorities NOT named in previous OJEU Contract Notice

	<b>Name</b>	<b>Contact Information</b>
Report Author	Tamalyn Goodwin	<a href="mailto:tamalyngoodwin@warwickshire.gov.uk">tamalyngoodwin@warwickshire.gov.uk</a> Tel: 01926 2724
Head of Service	Louise Wall	<a href="mailto:louisewall@warwickshire.gov.uk">louisewall@warwickshire.gov.uk</a>
Strategic Director	Monica Fogarty	<a href="mailto:monicafogarty@warwickshire.gov.uk">monicafogarty@warwickshire.gov.uk</a>
Portfolio Holder	Cllr Alan Cockburn	<a href="mailto:cllrcockburn@warwickshire.gov.uk">cllrcockburn@warwickshire.gov.uk</a>

## Warwickshire Waste Partnership

26 June 2012

### Review of Warwickshire's Love Food Hate Waste Christmas Campaign

#### Recommendation

That the Waste Partnership notes the progress made on the Love Food Hate Waste Winter 2011/12 Campaign, helping Warwickshire to achieve the targets set in the Waste Municipal Strategy.

#### 1.0 Background

The Waste Management team has been promoting the Love Food Hate Waste Campaign with the aim of achieving an increase in committed food waste reducers throughout the county, thereby reducing food waste by at least 1800 tonnes per year, equivalent to just half a loaf of bread per household per month or 681 grams.

#### 2.0 Love Food Hate Waste Promotion

Promotion took place between December 2011 and March 2012 in the form of radio activity, outdoor advertising, press advertising, talks and roadshows.

#### 3.0 Radio Activity

- 3.1 Touch FM, Rugby FM and Oak FM ran features to spread the message on-air and, in total, ran 10 weeks of promotion from December to March.
- 3.2 Waste Not Want Not – An interactive competition where listeners could phone in to enter a true or false quiz. Questions were based on food waste facts and figures published through WRAP's research. The quiz was aired on the breakfast show each morning for two weeks over the Christmas period, starting on the 19 December 2011 and was also promoted by other presenters throughout the day. As an incentive, a Love Food Hate Waste goodie bag was given to each listener who took part.
- 3.3 Love Food Hate Waste Challenge – Starting on 9 January for six weeks, two households were recruited by the radio station, to be part of the six-week long food waste challenge. A challenge was set each week with the aim of changing their food waste habits, for example, not going to the shops for a whole week and living out of what they had in their cupboards, or making tomorrow's meal out of yesterday's leftovers. Each Friday morning, the households would go on-air to update listeners on how their week went and what they had learnt. The competition culminated in a head-to-head challenge called 'Family Food Tunes', which was broadcast in a local town centre. Each family won a Love Food Hate Waste goodie bag and the winner went home with a £50 food voucher.



3.4 Love Food Hate Waste Week – Pre-promotion started week commencing 12 March 2012, with a week-long series of features aimed at householders and home owners commencing on 19 March 2012. The features pushed the central message of cutting down on waste in the home and highlighted the reasons for doing so.

#### **4.0 Outdoor Advertising**

Outdoor advertising took place in the form of billboards, bus streetliners and supermarket advertising with a minimum of 16 weeks exposure.

#### **5.0 Local Press**

5.1 In January 2012, a four-page newspaper wrap, based on the theme of freezing food and fridge storage, was published in the Rugby, Leamington and Stratford Observer, the Stratford Midweek and the Nuneaton Tribune.

5.2 In both December and March, a full-page editorial was published that also contained a survey to enable the number of committed food waste reducers to be measured at the end of the campaign.

#### **6.0 Roadshows and Talks**

Food demonstration roadshows took place in each District and Borough during the last two weeks of March 2012 to run alongside Love Food Hate Waste week on the radio. Cookery demonstration roadshows took place in Stratford, Leamington Spa, Rugby, Nuneaton and Atherstone to demonstrate to residents how delicious meals really can be made from leftover food or over-ripe fruit and vegetables, without compromising on taste.

#### **7.0 Survey**

Towards the end of the campaign, during March, a survey was published in the Rugby, Leamington and Stratford Observer, the Nuneaton Tribune and Stratford Herald. Residents could also complete the survey online, and at roadshows in return for a jute bag and giveaway. All completed surveys were entered into a free prize draw where 20 lucky winners were picked at random to receive a goodie bag. In total, 696 surveys were received.

#### **8.0 Conclusion**

Of the total surveys received, 675 answered questions which determine if they are committed food waste reducers (CFWR). Of these, 201 gave answers that determined they are CFWRs, giving a percentage of 30.3%. This shows an increase of 7,890 more residents now saving money by not wasting food.

	<b>Name</b>	<b>Contact Information</b>
Report Author	Caroline Faulkner	<a href="mailto:carolinefaulkner@warwickshire.gov.uk">carolinefaulkner@warwickshire.gov.uk</a> 01926 418088
Head of Service	Louise Wall	<a href="mailto:louisewall@wrawickshire.gov.uk">louisewall@wrawickshire.gov.uk</a>
Strategic Director	Monica Fogarty	<a href="mailto:monicafogarty@warwickshire.gov.uk">monicafogarty@warwickshire.gov.uk</a>
Portfolio Holder	Councillor A Cockburn	<a href="mailto:cllrcockburn@warwickshire.gov.uk">cllrcockburn@warwickshire.gov.uk</a>

## Warwickshire Waste Partnership

26 June 2012

### Full Year Estimated Waste and Recycling Data

#### Recommendation

That the Waste Partnership notes the provisional waste and recycling data – at Disposal and Collection Authority level – for the 4th quarter, January to March 2012, and the full year's estimates.

- 1.1 This report contains a mixture of data taken from Waste Data Flow and from Warwickshire County Council in-house records and, at the publication of this report, are considered **provisional estimates**.
- 1.2 The figures should be treated as provisional as data may be changed until all authorities' data is approved by the Environment Agency and the Department for Environment, Food and Rural Affairs (DEFRA) through the Waste Data Flow System.

## Provisional Waste Management Data Quarter 4 2011/12

Figures are taken from Warwickshire County Council in-house records and, at the publication of this report, are considered **provisional estimates**.

### 1.0 Total Municipal Waste Arising and Disposal Route (Tonnes)

	January	February	March	Q4 Total	Q3 Total
<b>Total Tonnes</b>	<b>20,778</b>	<b>18,117</b>	<b>23,140</b>	<b>62,035</b>	<b>59,912</b>
<b>Landfilled</b>	8,697	7,811	8,207	24,715	22,288
<b>Inert - Landfilled</b>	309	289	650	1,248	1,336
<b>Energy from Waste</b>	3,744	2,305	2,857	8,906	8,914
<b>Other Technology*</b>	0	0	0	0	551
<b>In-vessel Composting*</b>	1,554	1,324	2,020	4,898	8,036
<b>Windrow Composting*</b>	945	813	2,251	4,009	3,379
<b>Other Composting*</b>	287	302	357	946	728
<b>Recycling (HWRC)</b>	1,220	953	1,228	3,401	2,981
<b>Recycling (WCA)</b>	3,972	4,018	5,077	13,067	11,405
<b>Reuse</b>	50	302	493	845	324

\*Other Technology – Refuse Derived Fuel

\*Windrow composting – Outdoor composting of green garden waste from HWRCs, NBBC and NWBC

\*In Vessel composting – Indoor controlled composting of garden and food waste from RBC, WDC, SDC

\*Other composting – Chipboard and wood

### 2.0 Percentage of Waste by Disposal Route

	January	February	March	Q4 Total	Q3 Total
% Recycling	25.0%	27.4%	27.2%	26.5%	24.0%
% Composting	13.4%	13.5%	20%	15.9%	20.2%
% Reuse	0.2%	1.7%	2.2%	1.4%	0.5%
Total	38.6%	42.6%	49.4%	43.6%	44.7%

% Landfill	43.4%	44.7%	38.3%	41.9%	39.4%
% Energy from Waste and RDF	18%	12.7%	12.3%	14.5%	15.9%
Total	61.4%	57.4%	50.6%	56.4%	55.3%

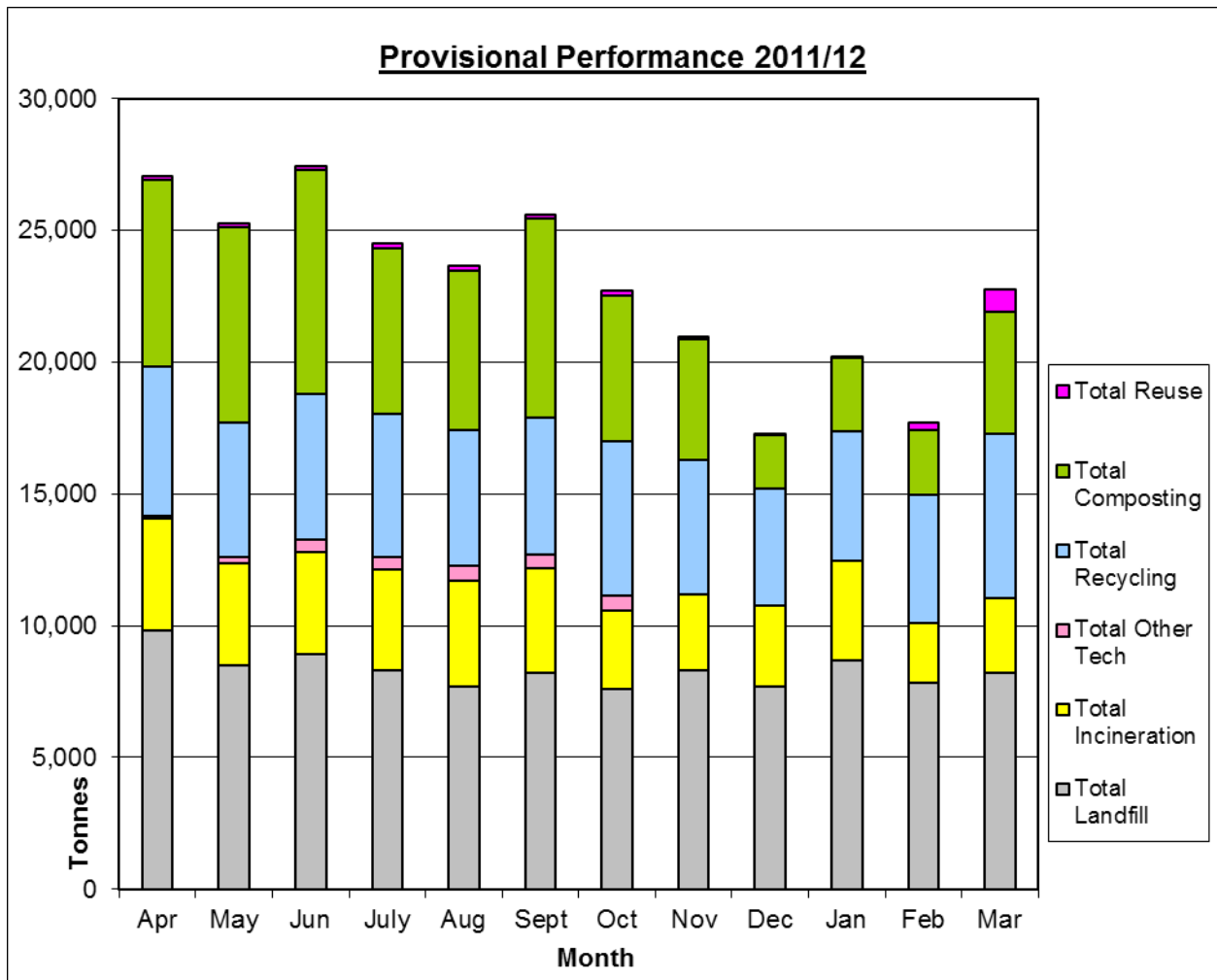
### 3.0 Estimated Provisional Performance

	<b>Q4 2010/2011</b>	<b>Q4 2011/2012</b>	<b>Change</b>
Recycling/Reuse Rate	17,192 tonnes	17,313 tonnes	☺ 121 tonnes up
	<b>25.9%</b>	<b>27.9%</b>	☺ 2% up
Composting Rate	11,668 tonnes	9,853 tonnes	X 1,815 tonnes down
	<b>17.6%</b>	<b>15.9%</b>	X 1.7% down
Recycling, Composting and Reuse Rate	28,946 tonnes	27,166 tonnes	X 1,780 tonnes down
	<b>43.7%</b>	<b>43.8%</b>	☺ 0.1% up
Landfill Rate	23,055 tonnes	25,963 tonnes	X 2,908 tonnes up
	<b>34.8%</b>	<b>41.8%</b>	X 7.8% up
Energy from Waste	14,727 tonnes	8,906 tonnes	X 5,821 tonnes down
	<b>22.1%</b>	<b>14.4%</b>	X 7.7% down
<b>Total Municipal Waste</b>	<b>66,728 tonnes</b>	<b>62,035 tonnes</b>	☺ 4693 tonnes down
			☺ 7% down

### 4.0 Comparison of Yearly Figures 2010/11 to 2011/12

	<b>2010/11 Year</b>	<b>2011/12 Year</b>	<b>Change</b>
Recycling/Reuse Rate	64,945 tonnes	66,712 tonnes	☺ 1,767 tonnes up
	<b>22.9%</b>	<b>25.2%</b>	☺ 2.3% up
Composting Rate	67,434 tonnes	59,682 tonnes	X 7,752 tonnes down
	<b>23.8%</b>	<b>22.4%</b>	X 1.4% down
Recycling, Composting and Reuse Rate	132,379 tonnes	126,394 tonnes	X 5,985 tonnes down
	<b>46.8%</b>	<b>47.6%</b>	☺ 0.8% up
Landfill Rate	95,741 tonnes	97,092 tonnes	X 1,351 tonnes up
	<b>33.7%</b>	<b>36.4%</b>	X 2.7% up
Energy from Waste	54,674 tonnes	42,563 tonnes	X 12,111 tonnes down
	<b>19.3%</b>	<b>16.0%</b>	X 3.3% down
<b>Total Municipal Waste</b>	<b>282,794 tonnes</b>	<b>266,049 tonnes</b>	☺ 16,745 tonnes down
			☺ 5.9% down

NB: District recycling rates are taken from claimed recycling credits. Last year's figures are taken from Waste Data Flow. All other figures are taken from Warwickshire County Council in-house records and, at the publication of this report, are considered **provisional estimates**.



## 5.0 District Provisional Performance – Household Waste

*Note: Figures are from the Waste Management System and not Waste Data Flow therefore WCA reporting differences will exist.*

	North Warwickshire		Nuneaton & Bedworth		Rugby		Stratford		Warwick	
	Year 2010/11	Year 2011/12	Year 2010/11	Year 2011/12	Year 2010/11	Year 2011/12	Year 2010/11	Year 2011/12	Year 2010/11	Year 2011/12
Recycling Rate	3,325 tonnes	3,643 tonnes	8,588 tonnes	8,789 tonnes	10,621 tonnes	10,158 tonnes	14,777 tonnes	14,040 tonnes	10,960 tonnes	10,982 tonnes
	12%	14%	16%	17%	26%	25%	27%	27%	22%	23%
Composting Rate	5,131 tonnes	4,565 tonnes	8,317 tonnes	8,622 tonnes	9,973 tonnes	9,494 tonnes	17,380 tonnes	15,376 tonnes	13,626 tonnes	13,004 tonnes
	19%	18%	16%	16%	25%	24%	32%	30%	27%	26%
Recycling, Composting and Reuse Rate	8,456 tonnes	8,208 tonnes	16,905 tonnes	17,411 tonnes	20,598 tonnes	19,655 tonnes	32,157 tonnes	29,418 tonnes	24,586 tonnes	23,986 tonnes
	31%	32%	32%	34%	51%	49%	60%	57%	49%	49%
Residual	18,556 tonnes	17,670 tonnes	35,788 tonnes	34,325 tonnes	19,743 tonnes	20,368 tonnes	21,848 tonnes	21,956 tonnes	25,500 tonnes	25,008 tonnes
	69%	68%	68%	66%	49%	51%	40%	43%	51%	51%
Total	27,012 tonnes	25,878 tonnes	52,693 tonnes	51,736 tonnes	40,336 tonnes	40,023 tonnes	54,005 tonnes	51,374 tonnes	50,086 tonnes	48,994 tonnes

	Name	Contact Information
Report Author	Nav Rai	<a href="mailto:navrai@warwickshire.gov.uk">navrai@warwickshire.gov.uk</a> Tel: 01926 418064
Head of Service	Louise Wall	<a href="mailto:louisewall@warwickshire.gov.uk">louisewall@warwickshire.gov.uk</a>
Strategic Director	Monica Fogarty	<a href="mailto:monicafogarty@warwickshire.gov.uk">monicafogarty@warwickshire.gov.uk</a>
Portfolio Holder	Cllr Alan Cockburn	<a href="mailto:cllrcockburn@warwickshire.gov.uk">cllrcockburn@warwickshire.gov.uk</a>